

THE CLOISTERS

11/12 GEORGE ROAD, EDGBASTON, BIRMINGHAM B15 1NP



SELF CONTAINED CONTEMPORARY OFFICE SUITES
FOR SALE OR TO LET
OFFICES FROM 1,761 SQ FT (163.65 SQ M)

The Cloisters is a courtyard development comprising of 10 two-storey self contained office units totalling 18,342 sq ft.

The Cloisters offers a range of offices from 1,761 sq ft and can be combined to create larger accommodation.

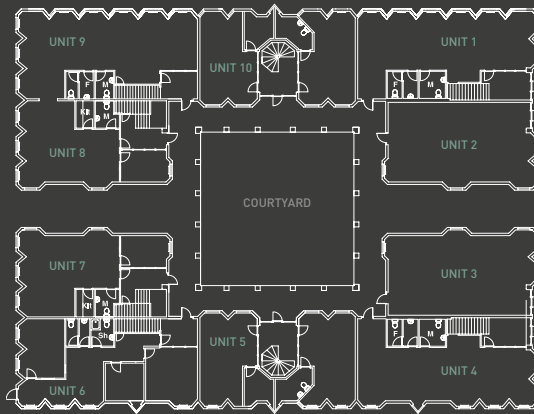
The building benefits from its own private car park with a ratio of 1:500 per sq ft. There is additional off road car parking located on George Road.



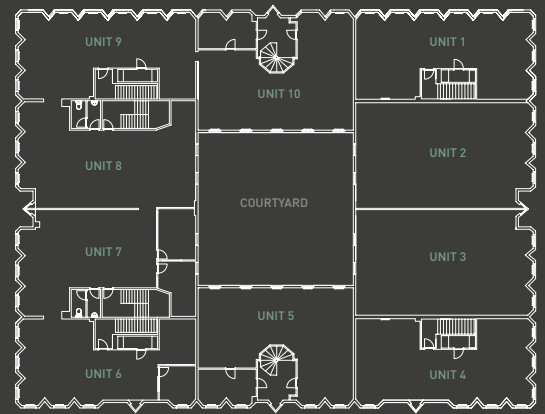
THE CLOISTERS

- Refurbished Suites
- Flexible lease terms
- Low service charge
- Generous parking
- Close to Birmingham City Centre
- Ideal for companies of up to 25 staff
- Leafy location within the Office sector of Edgbaston
- Delightful courtyard setting comprising of 10 self-contained office units
- EPC rated C (score 73)

Unit 1	1,761 sq ft
Unit 2	2,019 sq ft
Unit 3	2,019 sq ft
Unit 4	1,761 sq ft
Unit 5	1,795 sq ft
Unit 6	1,808 sq ft
Unit 7	1,788 sq ft
Unit 8	1,788 sq ft
Unit 9	1,808 sq ft
Unit 10	1,795 sq ft
Total	18,342 sq ft (1,704 sq m)



GROUND FLOOR



1ST FLOOR

(For illustrative purposes only)

gva.co.uk
3 Brindleyplace
Birmingham B1 2JB
0121 236 8236

George Jennings
GVA
0121 609 8458
george.jennings@gva.co.uk

CUSHMAN & WAKEFIELD
0121 232 4900
www.cushmanwakefield.com

Cameron Thomson
Cushman Wakefield
0121 232 4900
cameron.thomson@eur.cushwake.com

